

Palo Alto County, Iowa

Hog Finishing Unit

For Sale



Location: 5155 310th St., Emmetsburg, Iowa – 1 mile north and 1-1/2 miles west of Depew, IA

Legal: A tract of land located in the West Half (W1/2) of the Southeast Quarter (SE1/4) of Section Twenty-four (24), Township Ninety-seven (97) North, Range Thirty-two (32) West of the 5th PM, Palo Alto Co., Iowa. Tract contains 9.6 acres.

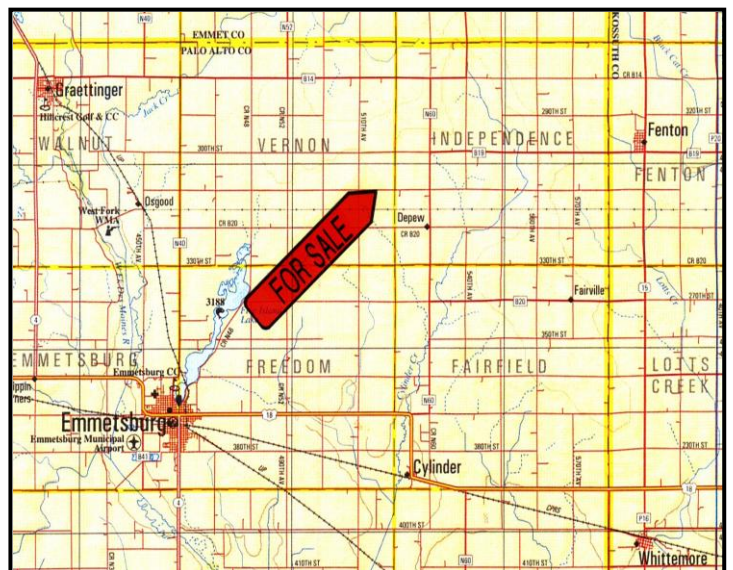
Description – Four 960 head finishing units (Farmland Tunnel Building) built in 1998 by Farm Pro. Each building is 42' x 190' with full slats (hog slats). Site includes a 1.3 million gallon concrete storage basin, aqua feeders, 25Kw PTO Generator. A 155' well on site was drilled in 1998. Electrical service to the site by Alliant Energy. Manure easements are in place.

Real Estate Taxes: \$ 5970 .00 annual est.

Possession: At closing

Price: \$575,000.00

Brokers Note: Swine producers and investors here is your opportunity to purchase a finishing unit located in Palo Alto County. This facility is located in the Emmetsburg, Graettinger, Fenton and Cylinder area.



Paul Ehmen, owner

Jon Hjelm / The ACRE Co.

Chuck Sikora

Spencer, Iowa

712-262-3529

theacresco.com



Information contained herein is gathered from sources deemed reliable but cannot be guaranteed by Jon Hjelm/The Acre Co.